

Columbus



Columbus

TRAVEL WHERE THE ROAD TAKES YOU

Explore new places off the beaten path and arrive at your destination in style in a Columbus fifth wheel. Designed with seasonal campers in mind, the Columbus has a distinct residential style. The 101" wide body, drop-frame chassis, high-end kitchen and a larger bedroom and bathroom truly create the feeling of a home away from home. Wherever your destination, Columbus has got you covered indoors and on the road.



NEW 2024
GRAPHICS PACKAGE



**SCAN THE QR CODE WITH
YOUR MOBILE DEVICE**

VIRTUAL TOURS, PHOTOS, VIDEOS, FOLLOW
COLUMBUS ON SOCIAL MEDIA, AND MORE!



STANDARDS AND OPTIONS

CONSTRUCTION

- 101" Wide Body
- 84" Bedroom Height
- All Welded Aluminum Frame Superstructure
- Climate Controlled Drop-Frame Storage
- 5/8" Tongue & Groove Plywood Floor
- Residential Style 5" Radius Wood Truss Roof with Alpha Ply Membrane w/Extended Life Sealant and 1/2" Decking (8' x 8" Sheets)
- 6' 11" Height Slides (Living Area)
- Heat Ducts in Out-of-Traffic Areas
- Snap-in Ceiling Molding (No Staples/Tape)
- 12V Heat Pads on All Holding Tanks
- Darco Wrap & Fiberglass Insulated Floors & Roof
- 2" Sidewall with Foam Insulation
- MORryde CRE3000 Suspension System
- High Gloss Fiberglass Vacuum Bonded Walls and Slideout Endwalls w/Dual Azdel
- 7000 Lb Lippert™ Axles with ABS (Anti-Lock Braking System)
- 16" Wheels w/Nitro Fill Tires
- Painted Fiberglass Front Cap with 1" Insulation
- Rear-View Camera Prep
- Slide Topper Prep

INTERIOR

- Soft-Close, Hidden-Hinge Reinforced Doors & Drawers w/Upgraded Hardware

- Upgraded Crack, Mold, & Mildew Resistant Flooring
- Upgraded, True Solid Surface Countertops (Bath/Kitchen)
- LED Light Fixtures
- Residential Style Crown Molding Throughout Unit
- Solid Wood Slide Fascia
- Roller Day/Night Shades (Main Areas)
- Solid Wood Steps

EXTERIOR

- Large Frameless Tinted Windows
- Slam Latches on All Storage Doors
- Magnetic Compartment Door-Holds
- Two-Tone Aluminum Wheels
- Painted Fiberglass Front Cap
- Heated Utility Convenience Center
- Black Tank Flush
- Outside Sprayer
- Two 30 Lb LP Tanks
- Entry Door w/Window & Screen Door
- Battery Disconnect
- Metal Wrapped Power Awning with LED Lighting
- Crank-Down Spare Tire
- 2" Tow Hitch
- Tire Pressure Monitoring System

KITCHEN

- Trash Can with Dedicated Storage (N/A 388FK)
- Rollaway Sink Covers
- Residential Style Under-Counter Storage
- Residential Style Backsplash

- Additional Lighting Above Sink Area
- Large Single Bowl Stainless Steel Sink
- Single-Lever Faucet with Pull-Out Sprayer

BEDROOM

- Mirrored Sliding Closet Doors
- High-End Bedspread & Pillows
- Reading Lights with USB Charging Ports
- C-Pap Shelves (Per Model)
- Smart TV
- Dresser w/Solid Wood Soft Close Drawers

BATHROOM

- Large Signature Spa Shower Surround w/Fiberglass Base
- Undermount Stainless Steel Sink
- Three-Speed Power Vent
- Porcelain Toilet
- Shower Skylight

FURNITURE

- Power Theater Seating with USB Charging & Storage
- 50/50 Split 88" Sleeper Sofa (Per Model)
- (2) Residential Style Dining Chairs

APPLIANCES

- 20 cu ft Residential Style Refrigerator with Ice Maker
- 4-Burner Gas Cooktop (N/A 388FK)

- 24" Residential Style Oven (N/A 388FK)
- 50" Smart TV w/Bluetooth® Audio and Exterior Speakers
- 12 Gal Water Heater with Quick Recovery
- Washer/Dryer Prep
- Full-System Water Purifier
- 30" Residential Style Stainless Steel Microwave
- (2) 15,000 BTU Coleman Ducted Serenity A/Cs (Zone 2 w/Heat Pump)
- 35,000 BTU Furnace
- 5,000 BTU Electric Fireplace (2 on 380RL, 388FK)
- Omni-Directional Rooftop Antenna with 4G LTE/Wi-Fi Prep
- 50 Amp Converter w/Built-in Charge Wizard & Auto Lithium Detect

OPTIONS

- Stackable Washer/Dryer
- Dual-Pane Windows
- Full-Body Paint
- Slide Toppers
- 12V 18 cu ft 3 Door Refrigerator w/Ice
- 2ND 260W Solar Panel
- 3RD Ducted A/C Installed IPO MaxxAir Vent
- 5.5KW Onan Generator
- Booth IPO Free Standing Table and Chairs (379MB Only)



MANDATORY PACKAGES

COMFORT PACKAGE



INTERIOR

- Upgraded Residential Style Hardware
- MCD Day/Night Roller Shades (*Main Areas*)
- Pop-Up Recepts
- Hybrid Carpet

APPLIANCES

- Dishwasher Prep (*N/A 388FK*)
- Washer/Dryer Prep
- Stainless Steel Appliance Package Including Microwave, 4 Burner Range & 20 cu ft Door Refrigerator (*N/A 388FK*)
- Living Room Ceiling Fan
- 50" Smart TV w/Bluetooth® Audio
- Bedroom Smart TV
- 5000 BTU Electric Fireplace

FURNITURE

- Power Theater Seating w/USB Charge
- 50/50 Split Sleeper Sofa
- Wall Mounted Free-Standing Dinette Table W/Extension
- (2) Residential Style Dinette Chairs (*Option 375BH, 376DS*)
- 2 Folding Chairs
- Large Kitchen Pantry (*Select Models*)

BATHROOM

- Large Signature Spa Walk-in One Piece Shower Surround w/Fiberglass Base
- Undermount Bath Sink with Solid Surface Tops
- Porcelain Toilet
- Aluminum Framed Bed Base w/King Bed
- 3rd A/C Prep w/Kitchen Maxx Air Vent

VOYAGER PACKAGE



CONSTRUCTION

- 6 Point Hydraulic Leveling System
- MORryde CRE3000 Suspension
- MORryde Upgraded Pinbox
- MORryde Strut Assist Step Above Entry Steps
- 7000 Lb Axles with ABS (*Anti-Lock Braking System*)
- E-Rated Tires with E-Rated Spare
- High Gloss Fiberglass Vacuum Bonded Walls w/Dual Azdel Onboard
- Two-Tone Painted Front Cap
- 12V Heat Pads on Tanks
- Back Up Camera Prep
- Slide Topper Prep
- Ladder
- LP Quick Connect

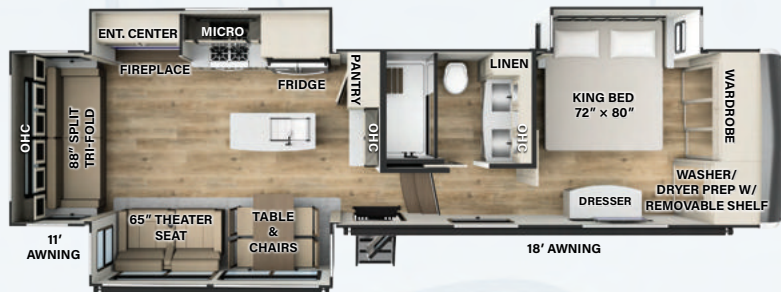
EXTERIOR

- Two-Tone Aluminum Wheels
- Tire Pressure Monitoring System
- 2" Tow Hitch
- Frameless Windows
- Battery Disconnect
- Metal Wrapped Awning w/LED Lights
- Syphon 360 Vent Covers

APPLIANCES

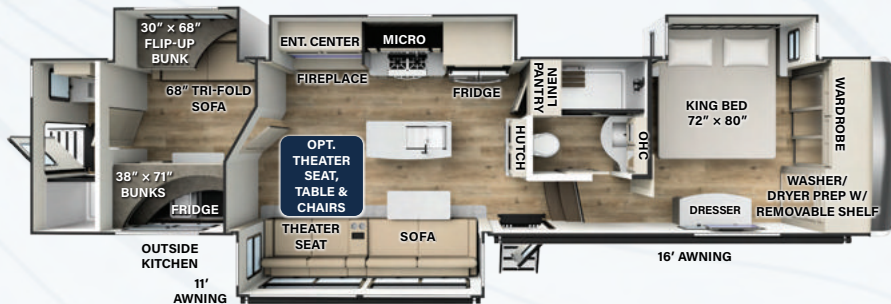
- (2) Quietcool 15K BTU Serenity A/Cs (*Zone 2 w/Heat Pump*)
- 12 Gal Water Heater
- Power Cord Storage Reel
- One Control Operating System
- Wi-Fi Booster w/4G LTE Capability Prep
- 260W Solar Panel w/30AMP Control w/1800W Inverter & Dedicated Recepts

FLOORPLANS



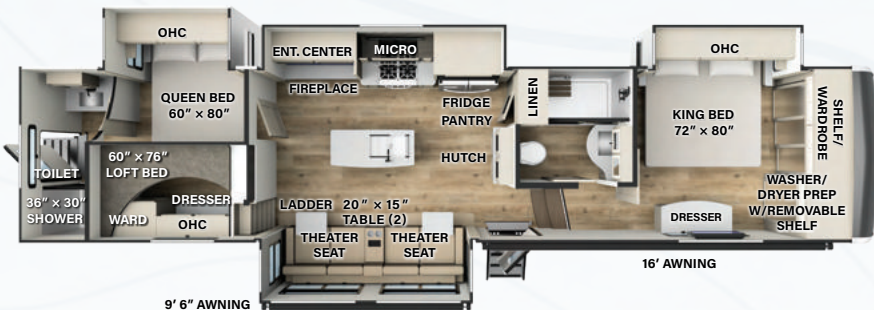
329DV

Dimensions	Weights	Tanks
Length: 38' 5"	UVW: 12341	Fresh: 75 Gal
Width: 101"	GVWR: 14599	Gray: 71 Gal
Height: 13' 6"	CCC: 2258	Black: 39 Gal
Awning: 11', 18'	Hitch: 2206	



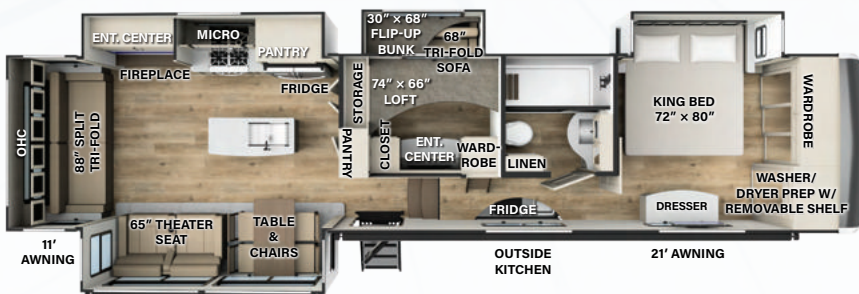
375BH

Dimensions	Weights	Tanks
Length: 42' 7"	UVW: 13953	Fresh: 75 Gal
Width: 101"	GVWR: 16199	Gray: 117 Gal
Height: 13' 6"	CCC: 2246	Black: 78 Gal
Awning: 11', 16'	Hitch: 2858	



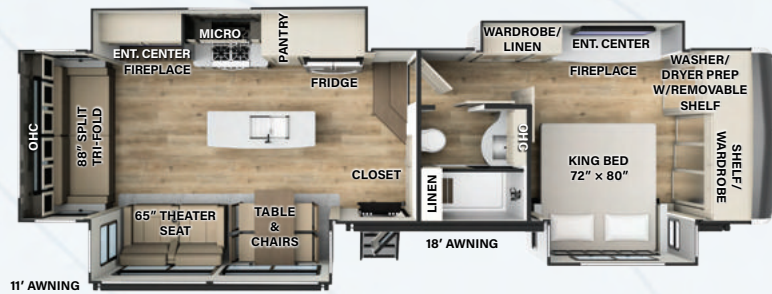
376DS

Dimensions	Weights	Tanks
Length: 42' 7"	UVW: TBD	Fresh: 75 Gal
Width: 101"	GVWR: TBD	Gray: 117 Gal
Height: 13' 6"	CCC: TBD	Black: 78 Gal
Awning: 9' 6", 16'	Hitch: TBD	



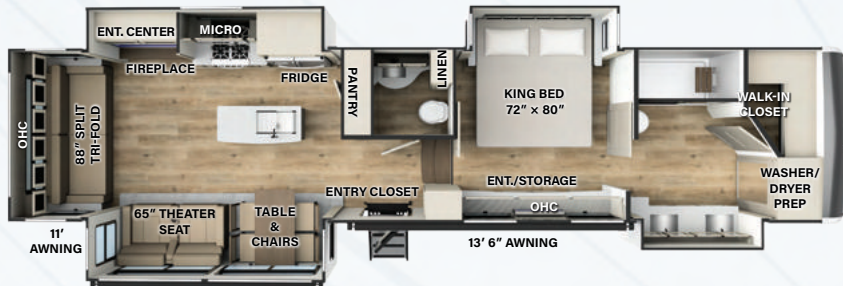
379MB

Dimensions	Weights	Tanks
Length: 42' 2"	UVW: 13906	Fresh: 75 Gal
Width: 101"	GVWR: 16199	Gray: 71 Gal
Height: 13' 6"	CCC: 2293	Black: 39 Gal
Awning: 11', 21'	Hitch: 2516	



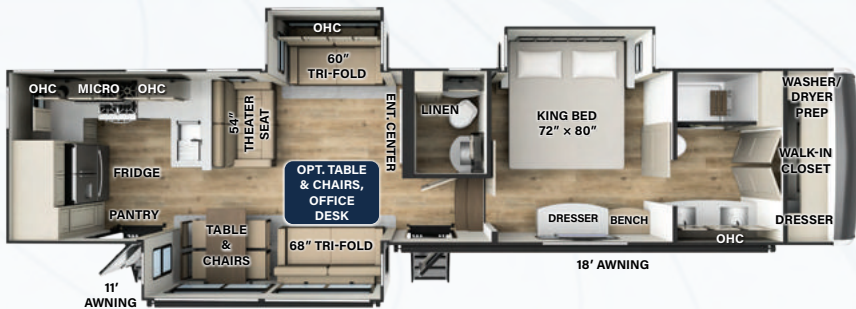
380RL

Dimensions	Weights	Tanks
Length: 37' 11"	UVW: 12854	Fresh: 75 Gal
Width: 101"	GVWR: 15499	Gray: 71 Gal
Height: 13' 6"	CCC: 2645	Black: 39 Gal
Awning: 11', 18'	Hitch: 2495	



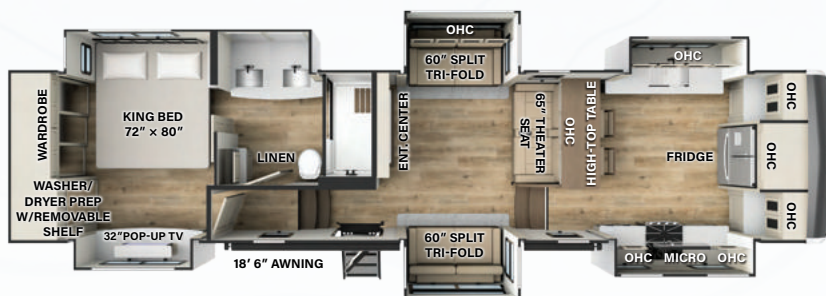
383FB

Dimensions	Weights	Tanks
Length: 42' 2"	UVW: 13722	Fresh: 75 Gal
Width: 101"	GVWR: 15999	Gray: 78 Gal
Height: 13' 6"	CCC: 2277	Black: 78 Gal
Awning: 11', 13' 6"	Hitch: 2756	



384RK

Dimensions	Weights	Tanks
Length: 42' 7"	UVW: 13327	Fresh: 75 Gal
Width: 101"	GVWR: 15599	Gray: 78 Gal
Height: 13' 6"	CCC: 2272	Black: 71 Gal
Awning: 11', 18'	Hitch: 2457	



388FK

Dimensions	Weights	Tanks
Length: 41' 10"	UVW: 13899	Fresh: 75 Gal
Width: 101"	GVWR: 16199	Gray: 75 Gal
Height: 13' 6"	CCC: 2300	Black: 39 Gal
Awning: 18' 6"	Hitch: 2436	

Columbus

COLUMBUS
A Division Of Forest River, Inc.
105-1/2 C.R. 14
Middlebury, In 46540
www.palominorv.com



Follow us!

#RVBOUND



CUSTOMER SATISFACTION



www.ForestRiverBuyLocal.com



PRE-DELIVERY INSPECTION FACILITY

20,000 square feet of quality assurance. The bare essentials for a premium product. This state-of-the-art facility gives immediate daily feedback to production for quality assurance in every unit built.

FREE MEMBERSHIP
to Forest River Owners' Group



FOREST RIVER OWNER'S GUIDE

Now you can have your Owner's Manual with you wherever you are. Download our FREE App from the App Store or Google Play and you'll have the information right at your fingertips.



Learn More


Scan this barcode using a QR Reader on your smart phone to learn more about Forest River.



A Berkshire Hathaway company

Specification Definitions

GVWR (Gross Vehicle Weight Rating): is the maximum permissible weight of the unit when fully loaded. It includes all weights, inclusive of all fluids, cargo, optional equipment and accessories. For safety and product performance do NOT exceed the GVWR. **GAWR (Gross Axle Weight Rating):** is the maximum permissible weight, including cargo, fluids, optional equipment and accessories that can be safely supported by a combination of all axles. **UVW (Unloaded Vehicle Weight):**¹ is the typical weight of the unit as manufactured at the factory. It includes all weight at the unit's axle(s) and tongue or pin and LP Gas. The UVW does not include cargo, fresh potable water, additional optional equipment or dealer installed accessories. **CCC (Cargo Carrying Capacity):**¹ is the amount of weight available for fresh potable water, cargo, additional optional equipment and accessories. CCC is equal to GVWR minus UVW. Available CCC should accommodate fresh potable water (8.3 IWW per gallon). Before filling the fresh water tank, empty the black and gray tanks to provide for more cargo capacity. Each Forest River RV is weighed at the manufacturing facility prior to shipping. A label identifying the unloaded vehicle weight of the actual unit and the cargo carrying capacity is applied to every Forest River RV prior to leaving our facilities. The load capacity of your unit is designated by weight, not by volume, so you cannot necessarily use all available space when loading your unit.

All information contained in this brochure is believed to be accurate at the time of publication. However, during the model year, it may be necessary to make revisions and Forest River, Inc., reserves the right to make all such changes without notice, including prices, colors, materials, equipment and specifications as well as the addition of new models and the discontinuance of models shown in this brochure. Therefore, please consult with your Forest River dealer and confirm the existence of any materials, design or specifications that are material to your purchase decision. © 2024 Columbus RV, a Division of Forest River, Inc., a Berkshire Hathaway Company. All Rights Reserved.  02/09 Columbus.

¹ Estimated Average based on standard build optional equipment

YOUR COLUMBUS DEALER