

SABRE

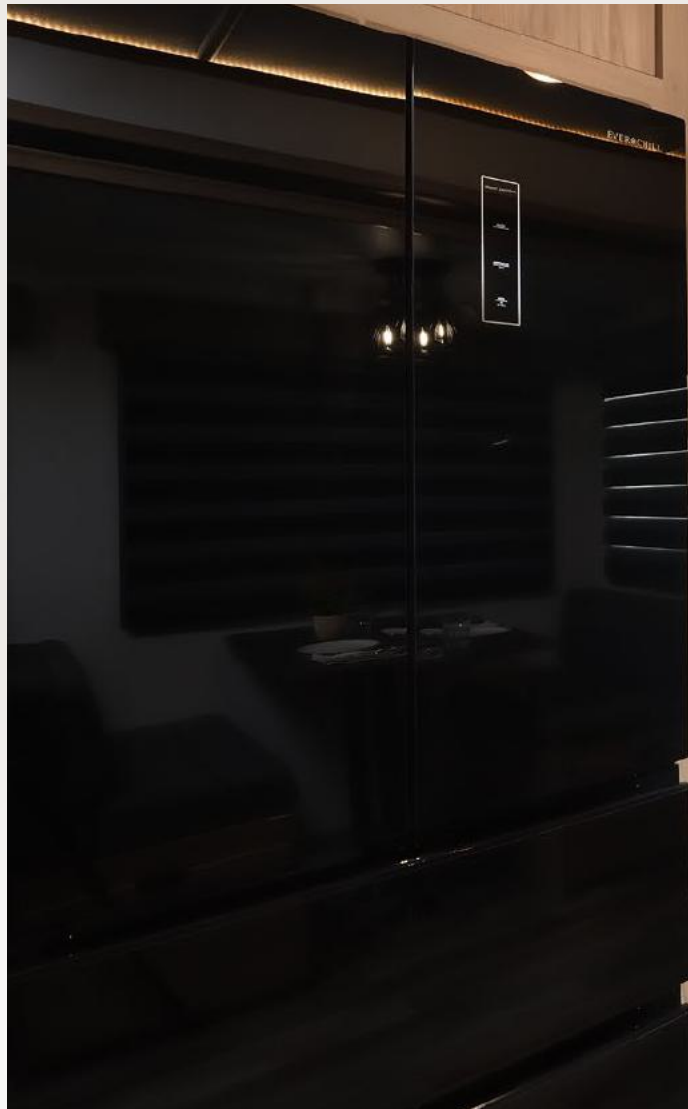
AFFORDABLE LUXURY FIFTH WHEELS





MORE CONTENT. MORE PRACTICAL. MORE AFFORDABLE.

Sabre fifth wheels are designed to make luxurious RV living affordable. We invite you to compare Sabre to America's most popular floor plans. Sabre provides more standard features while offering greater affordability. **CHOOSE SABRE. GET MORE.**



Unique Lightweight & Compact Design.

Our 26BBR is versatile and functional for those wanting to stay as compact as possible without compromising space and amenities. The rear room is truly special with a designated office space that transforms into a spacious bunk room or even a sitting area with a foldable bunk mat/sofa. It's perfect for a remote office, arts & crafts, remote learning, sleeping space or simply a spot to get some private time away from the main living area.





SABRE 26BBR

HITCH	UVW	C.C.C.	LENGTH **
1,565	7,785	2,177	29' 10"
HEIGHT **	WIDTH	AWNING	CAPACITY (GAL.)
13' 5"	96"	12'	49 30 30
			FRESH GRAY BLACK



Bunk Room with Hidden Pantry.

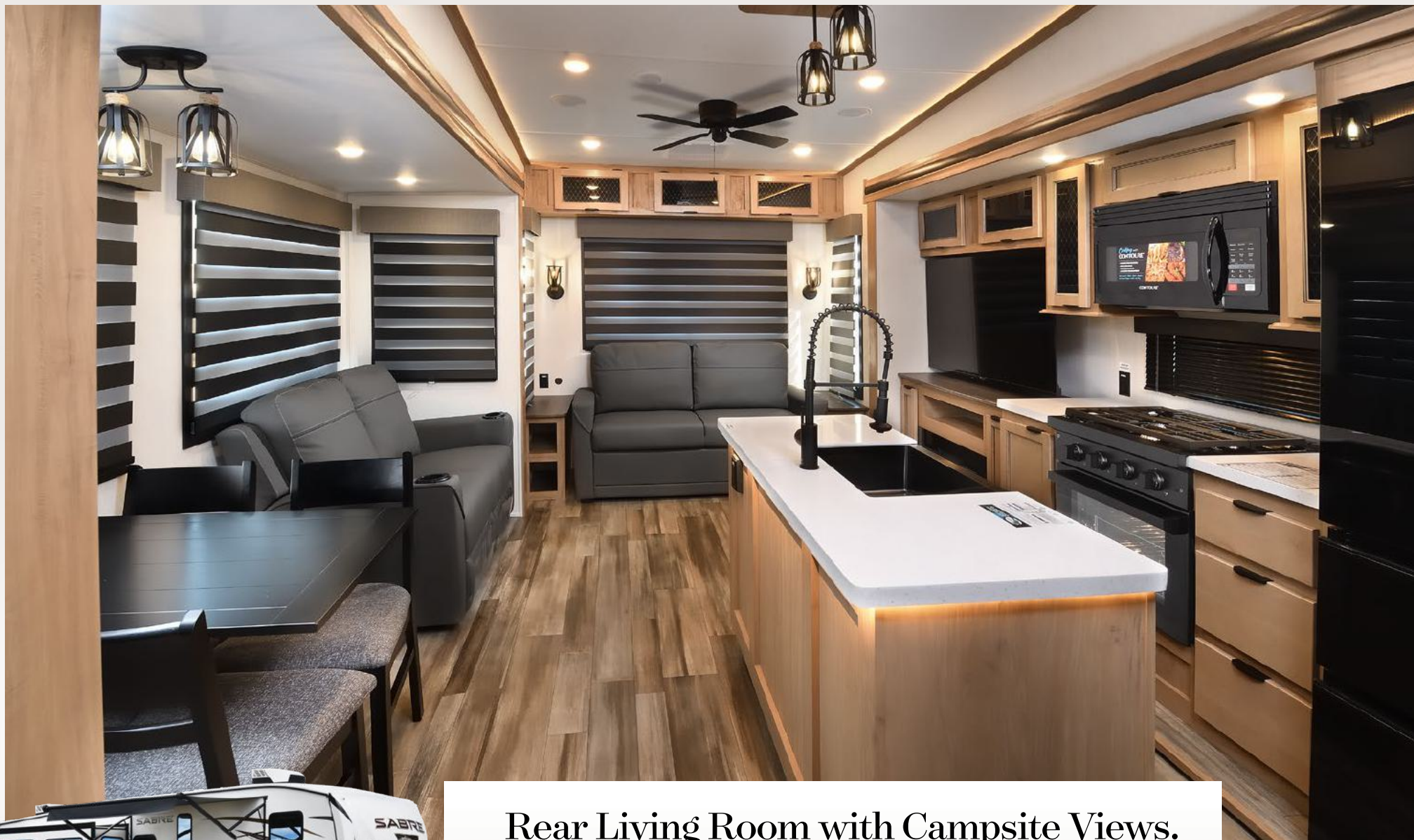
Our 32BHT is designed for families looking for private space for the kids or guests while staying within a length of 36 ft. The rear bunk area features 2 twin size beds and the tri-fold sofa in the living room expands into a full size bed. There's also a clever hidden pantry built into the entertainment center and many more hidden surprises to uncover!





SABRE 32BHT

HITCH	UVW	C.C.C.	LENGTH **
2,145	10,493	2,800	36' 6"
HEIGHT **	WIDTH	AWNING	CAPACITY (GAL.)
13' 5"	96"	12'	49 78 30
			FRESH GRAY BLACK



Rear Living Room with Campsite Views.

Our 32GKS features a gorgeous rear living room that's flanked with huge windows letting in lots of natural light and the view of your campsite. It also boasts an impressive chef's kitchen and a large main suite while staying under a true length of 35 ft.





SABRE 32GKS

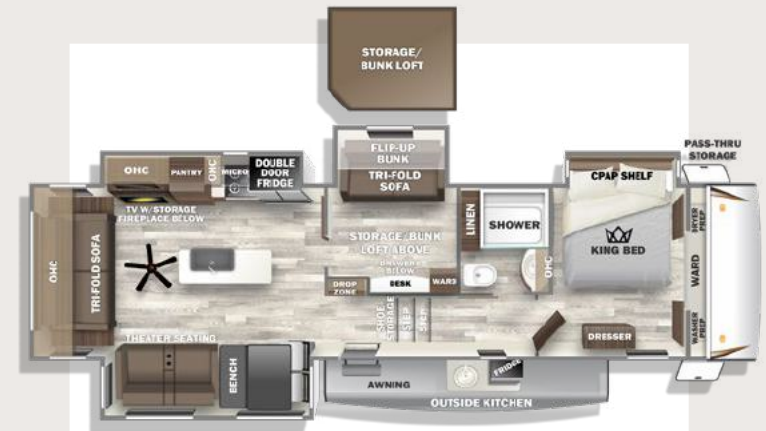
HITCH	UVW	C.C.C.	LENGTH **
1,815	9,953	2,838	34' 10"
HEIGHT **	WIDTH	AWNING	CAPACITY (GAL.)
13' 5"	96"	12'	49 60 30
			FRESH GRAY BLACK



Versatile with Mid-Flex Room.

Our 36FLX is a fresh take on "mid-bunk" designs. Our Flex room is great not only as an extra sleeping area, but is set up for a mobile office as well! We also maximize storage and sleeping space with a large loft overhead the Flex room. In the rear is a gorgeous rear living room that's flanked with huge windows letting in lots of natural light and the view of your campsite.





SABRE 36FLX

HITCH	UVW	C.C.C.	LENGTH **
2,115	11,448	3,072	41' 1"
HEIGHT **	WIDTH	AWNING	CAPACITY (GAL.)
13' 5"	96"	16'	49 76 38
			FRESH GRAY BLACK



Luxurious Front Living Room.

Our 37FLH is a gorgeous front living room design that boasts an incredible private owner's suite and a half-bathroom. The front living room area is perfect for movie nights and doubles as a bedroom with 2 tri-fold sleeper sofas. Stepping into the kitchen you'll immediately notice all the premium solid surface countertops, a large 12 volt fridge, air fryer microwave, a large oven and handmade real wood cabinetry.





SABRE 37FLH

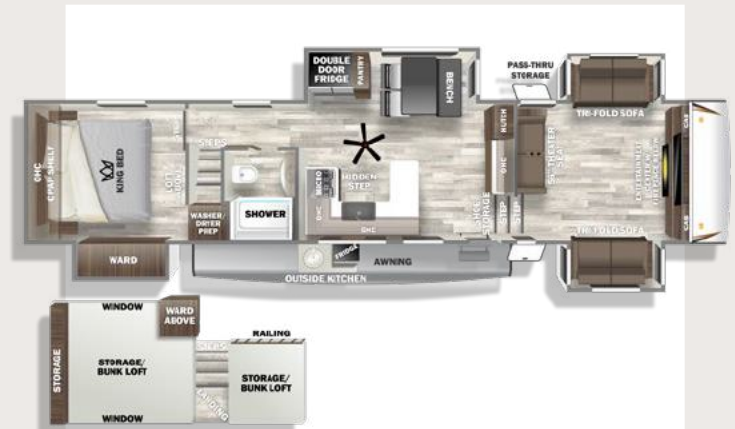
HITCH	UVW	C.C.C.	LENGTH **
2,345	11,948	2,717	43'
HEIGHT **	WIDTH	AWNING	CAPACITY (GAL.)
13' 5"	96"	18'	49 94 76
			FRESH GRAY BLACK



Front Living Room for Families.

Our 37FLL brings the best of both worlds with a spacious front living room design and double loft setup that allows you to sleep up to 8 comfortably. Overhead the bathroom is a storage loft and a larger sleeping loft is over the main bedroom. The front living room has 2 tri-fold sleeper sofas that form into a SUPER bed along with a smart TV and ambient accent lighting that makes for great movie nights!





SABRE 37FLL

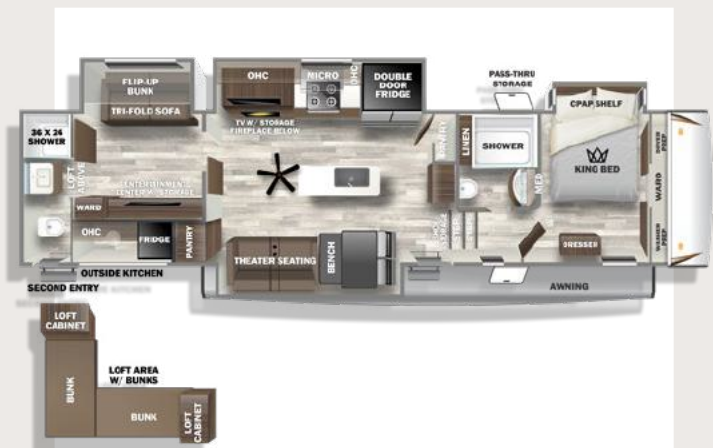
HITCH	UVW	C.C.C.	LENGTH **
2,570	11,918	2,972	42' 9"
HEIGHT **	WIDTH	AWNING	CAPACITY (GAL.)
13' 5"	96"	18'	49 76 38
			FRESH GRAY BLACK



2 Full Bathrooms & 2 Bedrooms.

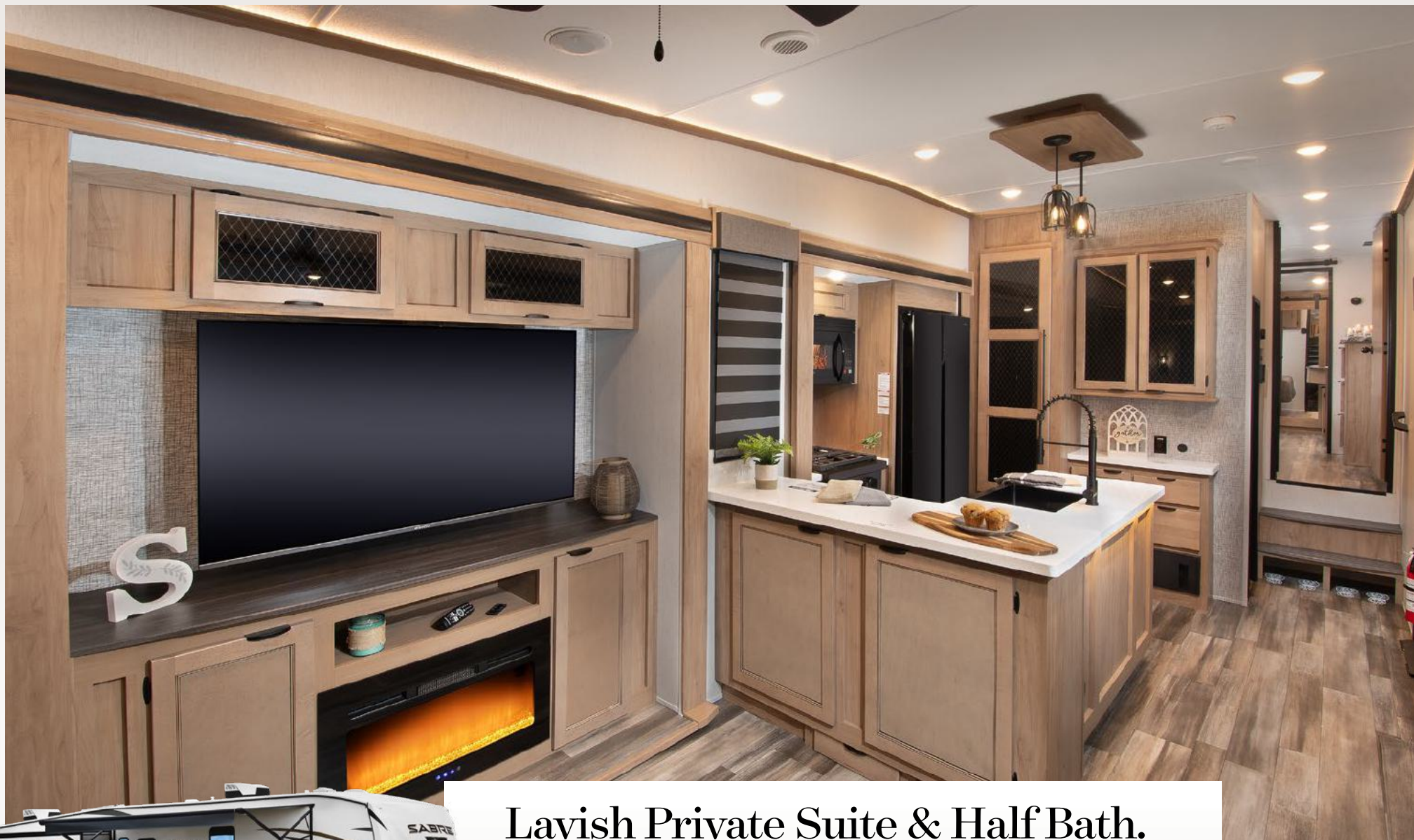
Our 38DBL is the ultimate family bunkhouse that can sleep up to 9 comfortably and has MASSIVE storage capacity. The rear bedroom has a full second bathroom, including a second shower, L-shaped lofts, spacious wardrobe, tri-fold sleeper sofa and a flip down bunk bed. Even the kitchen is fit for a chef with a large island, breakfast hutch, solid surface counters and much more!





SABRE 38DBL

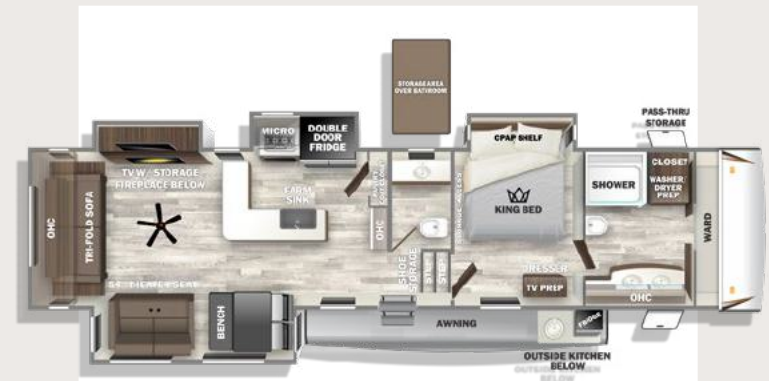
HITCH	UVW	C.C.C.	LENGTH **
2,120	12,378	2,062	43' 1"
HEIGHT **	WIDTH	AWNING	CAPACITY (GAL.)
13' 5"	96"	21'	49 106 68
			FRESH GRAY BLACK



Lavish Private Suite & Half Bath.

Our 38RLH is an incredibly spacious front bathroom design that features a his & hers sink, stackable washer/dryer prep, storage loft and impressive wardrobe space. In the rear is a gorgeous rear living room that's flanked with huge windows letting in lots of natural light and the view of your campsite. Also onboard is a beautiful kitchen with premium solid surface countertops, a large 12 volt fridge, air fryer microwave, a large oven and handmade real wood cabinetry.





SABRE 38RLH

HITCH	UVW	C.C.C.	LENGTH **
2,065	12,038	2,347	43' 3"
HEIGHT **	WIDTH	AWNING	CAPACITY (GAL.)
13' 5"	96"	20'	49 76 68
			FRESH GRAY BLACK

SABRE

Standard Features & Equipment

WE BELIEVE
EVERYTHING SHOULD
BE INCLUDED FROM
THE START.

CONVENIENCE PACKAGE

- > 50 Amp Detachable Marine Style Power Cord
- > Backup and Security Camera
- > Electric Auto-Level System
- > Heated, Forced Air Underbelly w/ Enclosed Gate Valves
- > PVC Roof Membrane
- > Thermal Foil Protective Barrier
- > Universal Docking Station w/ Black Tank Flush and Shower
- > Vacuum Bond Laminated Sidewalls and Slide Outs
- > Adjustable Power Awning w/ LED Lighting
- > Aluminum Wheels w/ EZ Lube Hubs
- > Detachable & Adjustable Stable Steps (Primary Entrance)
- > Convenient Sewer Hose Storage
- > Exterior TV Hookup w/ Co-Ax Connection
- > Friction Hinge Entry Door
- > High Gloss Gel-coat Front Cap w/ LED Lighting
- > Outdoor LP Quick Connect
- > Tire Pressure Safety Sensors
- > Large Folding Entry Assist Handle (Main Entrance)
- > Rear Ladder Prep
- > Solar Reflective Windows
- > Black Glass Entry Door
- > Tankless Water Heater

BISTRO KITCHEN PACKAGE

- > Colossal 12V Fridge w/ French Doors
- > Solid Surface Countertops
- > Real Wood Lumbercore Cabinetry
- > 30" Microwave (NA 26BBR)
- > Residential Style Farm Sink

- > Lighted Pantry w/ Motion Sensor Lighting
- > High Rise Pulldown Kitchen Faucet w/ Spring Spout
- > Ceiling Fan
- > Ambient Accent Lighting (Kitchen & Living Area)
- > Black Opal Appliance Accents

ULTIMATE COMFORT PACKAGE

- > Zebra Shades (Main Living Area & Kitchen)
- > Twin 15K BTU Ducted Air Conditioners w/ Thermostat (NA 26BBR) **
- > One Control Central Command Center w/ Bluetooth
- > Craftsmen Style Barn Door
- > Bathroom Skylight
- > Porcelain Stool
- > Tri-Fold Sleeper Sofa
- > Vintage Gaslight Decorative Lighting
- > King Bed (NA 26BBR)
- > Over-Sized Bed Slides (NA 26BBR)
- > Large Residential TV
- > Linoleum Flooring (Main Floor & Upper Deck)
- > Dual High Output Charging Ports Throughout
- > Exclusive MK Design Home Residential Collection
- > Residential 5/8' Tongue & Groove Plywood Floor Decking
- > Washer/Dryer Prep
- > Over-Sized Slider Windows

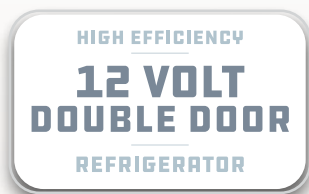
JUICE PACK SOLAR SUPPORT SYSTEM

- > Roof Mount 100W Solar Panel w/ 12V Battery, Voltage Meter & 30 Amp Controller (Expandable to 450W)

*** 26BBR has one 15K BTU Ducted Air Conditioner w/ Thermostat, Prepped for 2nd AC*

SWEET 16

INTERIOR FEATURES



French Door
Refrigerator



Wood Core Cabinetry



Smart TVs



Dual 15K BTU
Whisper Cool AC



Solid Surface
Countertops



Convection Air Fryer
Microwave



Day/Night
Zebra Shades



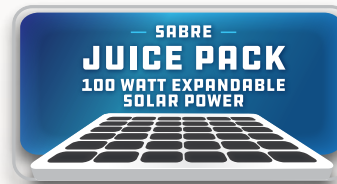
Ambient
Accent Lighting

SWEET 16

EXTERIOR FEATURES



**Auto-Leveling
System**



**Juice-Pack
Solar Package**



**Vacuum-Bonded
Laminated Walls**



**Extended Season
Polar Package**



**Back-up
Camera System**



Tankless Water Heater



**Solar Reflective
Windows**



**Industry-Leading
Roof Protection**



24/7 EMERGENCY ROADSIDE ASSISTANCE WITH VEHICLE PURCHASE*

TOWING
JUMP-STARTS
TIRE CHANGES
FLUID DELIVERY
LOCKOUT
SERVICE

WINCH-OUT
MOBILE MECHANIC
TECHNICAL
SUPPORT
DEALER LOCATOR
SERVICES



*VALID FOR 1 YEAR FROM DATE OF PURCHASE



PRE-DELIVERY INSPECTION FACILITY

20,000 square feet of quality assurance. The bare essentials for a premium product. This state-of-the-art facility gives immediate daily feedback to production for quality assurance in every unit built.

CUSTOMER SATISFACTION



www.ForestRiverBuyLocal.com

YOUR **SABRE** DEALER

FREE MEMBERSHIP
to Forest River Owners' Group

www.forestriverfrog.com



Learn More

Scan this barcode using
a QR Reader on your
smart phone to learn
more about Forest River.



A Berkshire Hathaway company.

SPECIFICATION DEFINITIONS

GVWR (Gross Vehicle Weight Rating) - is the maximum permissible weight of the unit when fully loaded. It includes all weights, inclusive of all fluids, cargo, optional equipment and accessories. For safety and product performance do NOT exceed the GVWR. **GAWR (Gross Axle Weight Rating)** - is the maximum permissible weight, including cargo, fluids, optional equipment and accessories that can be safely supported by a combination of all axles. **UVW (Unloaded Vehicle Weight)*** - is the typical weight of the unit as manufactured at the factory. It includes all weight at the unit's axle(s) and tongue or pin and LP Gas. The UVW does not include cargo, fresh potable water, additional optional equipment or dealer installed accessories. *Estimated average based on standard build optional equipment. **CCC (Cargo Carrying Capacity)**** - is the amount of weight available for fresh potable water, cargo, additional optional equipment and accessories. CCC is equal to GVWR minus UVW. Available CCC should accommodate fresh potable water (8.3 lbs per gallon). Before filling the fresh water tank, empty the black and gray tanks to provide for more cargo capacity. **Estimated average based on standard build optional equipment

Each Forest River RV is weighed at the manufacturing facility prior to shipping. A label identifying the unloaded vehicle weight of the actual unit and the cargo carrying capacity is applied to every Forest River RV prior to leaving our facilities. The load capacity of your unit is designated by weight, not by volume, so you cannot necessarily use all available space when loading your unit.

2577 E. KERCHER RD. GOSHEN, IN 46528 WWW.FORESTRIVERINC.COM/SABRE 574.642.3697

All information contained in this brochure is believed to be accurate at the time of publication. However, during the model year, it may be necessary to make revisions and Forest River, Inc., reserves the right to make all such changes without notice, including prices, colors, materials, equipment and specifications as well as the addition of new models and the discontinuance of models shown in this brochure. Therefore, please consult with your Forest River dealer and confirm the existence of any materials, design or specifications that are material to your purchase decision. Litho. U.S.A. FOR 1995 P/W: 2022.09.13